

HIGH CAPACITY HYDRAULIC LOAD LIFT PLATFORM



Experimental capabilities

- Study of a hydraulic cylinder in normal operation and differential with or without applied load
- Study of hydraulic components commonly used on high capacity systems (controlled poppet valves, cartridge valves)
- Diagnosis and replacement of defaulting distributor
- Diagnosis and replacement of defaulting controlled valve.
- Diagnosis and replacement of a defaulting pressure limiter
- Setting of operating pressures (pressure limiter), jet change, spring, etc ...
- Movement speed of adjustment with slowdown phases
- etc...

DIDATEC– Zone d'activité du parc – 42490 FRAISSES- FRANCE
Tél. +33(0)4.77.10.10.10 – Fax+33(0)4.77.61.56.49 – www.didatec-technologie.com
email : service_commercial@didatec-technologie.com

Reproduction interdite / copy prohibited– Copyright DIDATEC mars-16- page 1

Dans le cadre de l'amélioration permanente de nos produits, ce descriptif technique est susceptible d'être modifié sans préavis
As part of the continuous improvement of our products, this technical specification may be modified without previous notifying

MMH700

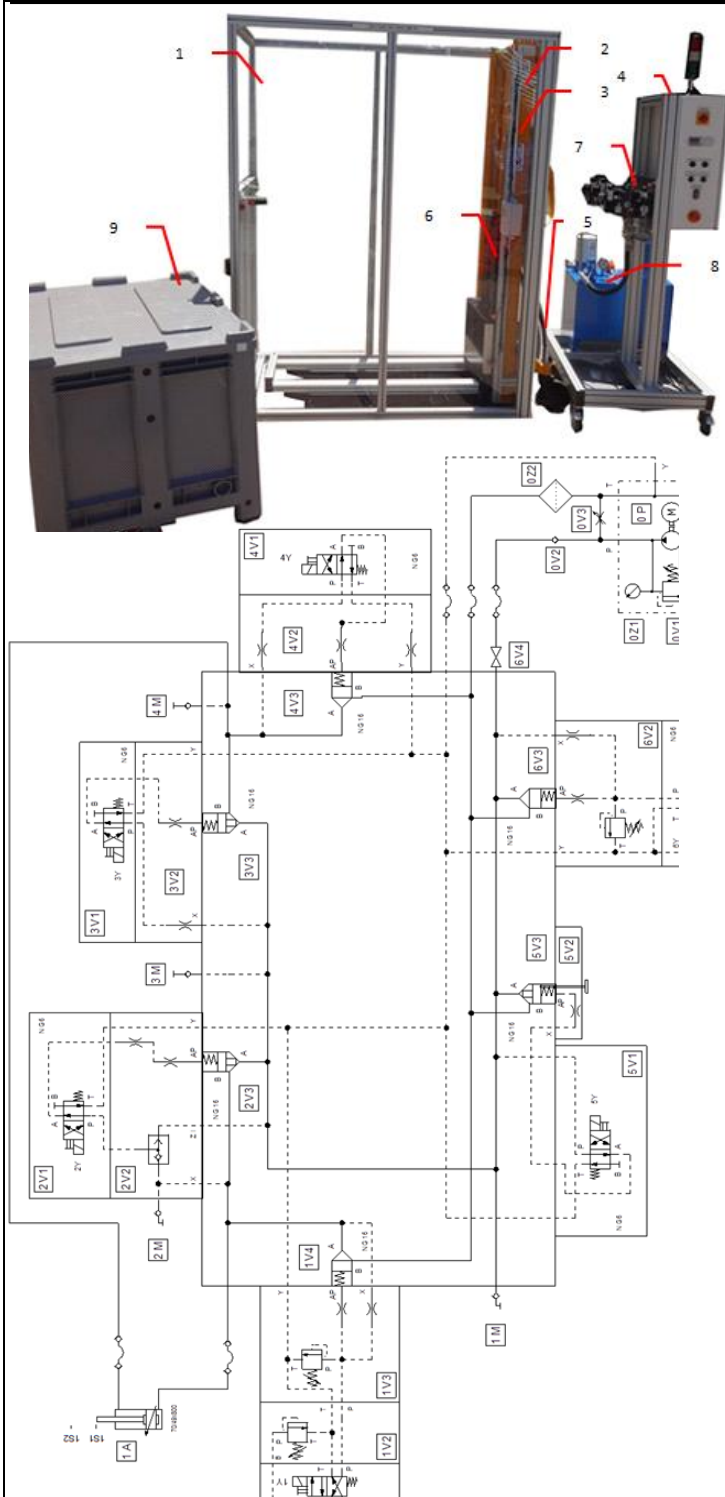


Technical specifications:

- Operative part composed by a load lift system welded steel frame capacity up 1T5, protected by a casing of anodized aluminum profile attached to the system. The set is equipped with an access door with safety contact for setting up the crate and directional locking castors for easy movement of the set.
- Inductive sensors limit switches' top and bottom: maximum stroke: 1600mm approx.
- Inductive sensors top and bottom slowdown, adjustable position.
- The electrical control box and hydraulic unit on independent frame aluminum profile, mounted on directional locking castors. The box is composed of motor circuit breakers and differential 30mA, contactors, security module preventa, PLC (software & backup provided), integrates the control panel with switches for the passage of normal / differential mode, manu / auto / continuous Up -acy / Down-dcy buttons, signaling the state of the machine by tricolor indicator glass, switch, emergency stop, etc ... Stainless steel retention tank for drips
- Hoses equipped with self closing flat face couplers to connect the plant to the cylinder and quick connector Harting type to connect the position sensors and security of the operative part to the electric box.
- Cylinder 800mm stroke with double chain system (secured reeving) to obtain a consistent stroke 1600mm for good visualization of slowdown phases and the differential mode. Parachute valve (load holding function)
- Set of poppet valve logic range 16, control with electrodistributors, type cartridge for mounting on drilled block positioned at chest height, with pressure taps and flow rate. Function balancing, regulating of controlled flow rate (slow and fast speed).
- Hydraulic plant of 4Kw, 1500T/min and 20L/min, 75L tank, equipped with pressure limiter, return filter with clogging indicator, visual and electrical low level, thermostat, etc ...
- Pallet crate on wheels with lid in order to exert a stable load on the operative part. Capacity 500L or approximately 800Kg with supplied sand. Secure anchorage of the crate on the elevator

Accessories included:

Defaulting Material: 4/2 distributor, 2 logic valves, one pressure limiter, etc ...



MMH700



Services required

- Electrical supply : 400 Vac – 50 Hz – 20 A
- Other volume:
- Hydraulic unit + electrical control box 1250*750*1850 for 250kg
- Pallet crate on wheels: 1200 * 800 * 780Volume: 500L
- Dimensions operative part: (LxWxH mm): 2000 x 1050 x 2100
- weight (Kg): 350

Note : if the equipment installation is operated by our staff, all supplies and exhaust connections required must stand at less than 2m from the machine

Documentation

- User's manual
- Pedagogical manual
- Technical documentation of the components
- Lab exercises
- Certificate of conformity CE

Options

- Kit of hydraulic pressure measurements, flow, rate, temperature, and other analog signal
- Ref : MMH 010