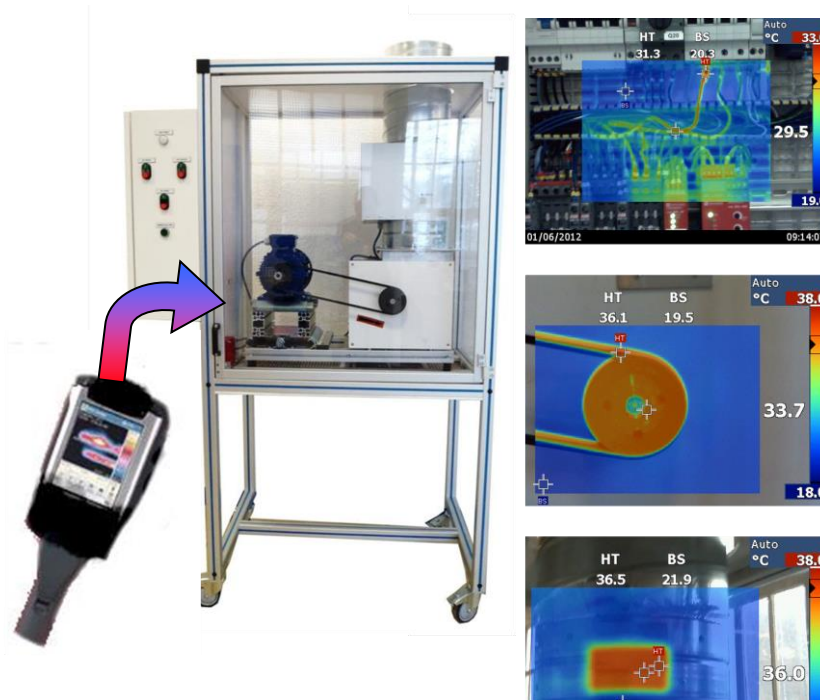


INFRARED THERMOGRAPHY TRAINING UNIT



Infrared thermography system essential for these applications / not included in the MTI 100.

Experimental capabilities

- Display of hot spots on a unit heater system
- Highlighting the pitfalls inherent in the thermographic analysis (reflection, screen effects, differences in emissivity)
- Warm up by Joule effect
- Mechanical warm up
- Thermal bridging defects
- Settings, modification or replacement of the system elements following diagnostic

DIDATEC– Zone d'activité du parc – 42490 FRAISSES- FRANCE
Tél. +33(0)4.77.10.10.10 – Fax+33(0)4.77.61.56.49 – www.didatec-technologie.com
email : service_commercial@didatec-technologie.com

Reproduction interdite / copy prohibited– Copyright DIDATEC mai-16- page 1

Dans le cadre de l'amélioration permanente de nos produits, ce descriptif technique est susceptible d'être modifié sans préavis
As part of the continuous improvement of our products, this technical specification may be modified without previous notifying

MT1100



Operating principle

The maintenance bench by infrared thermography is specially designed for applications of maintenance of electrical installations, electrotechnical, thermal and mechanical

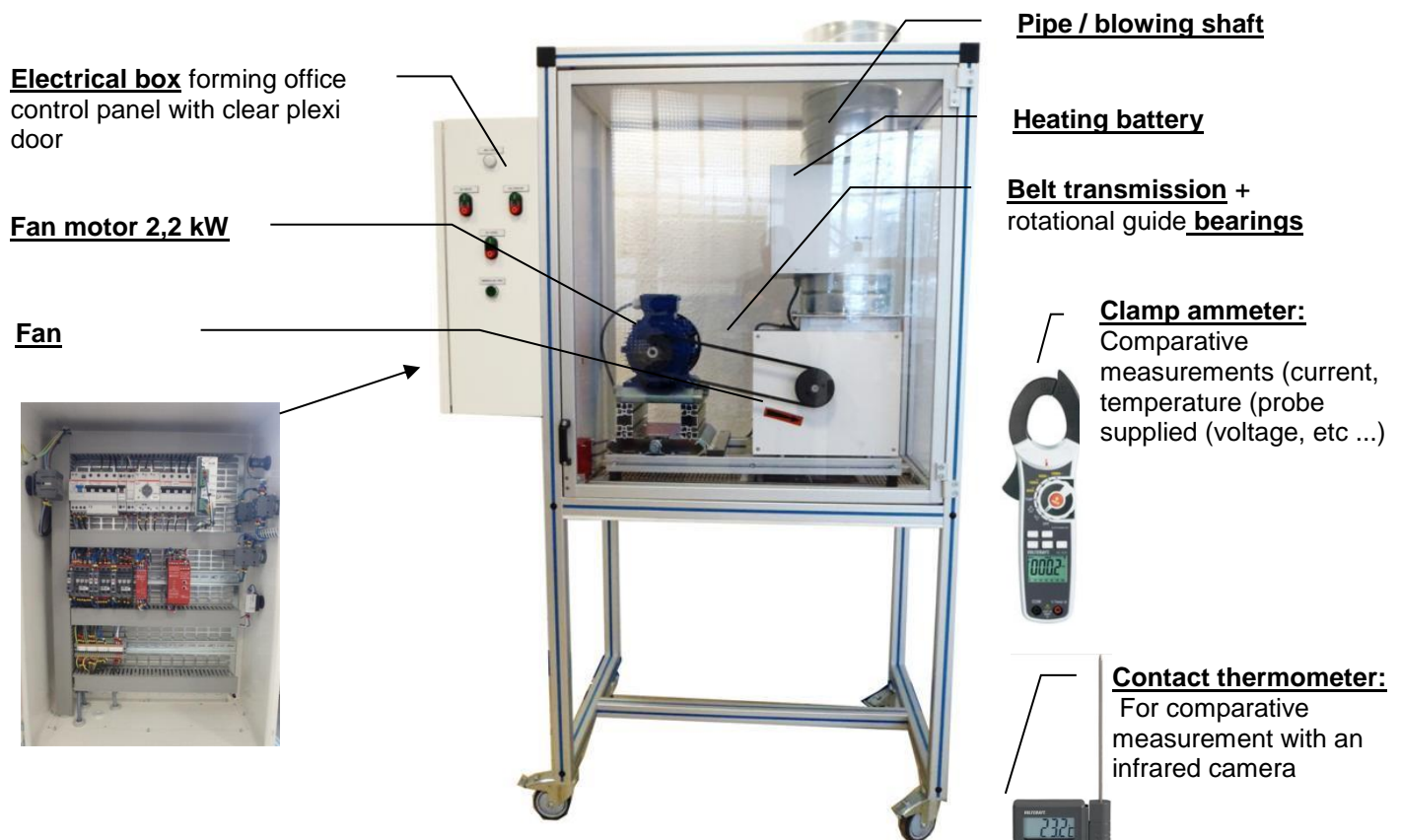
The robust design of this device makes it suitable for use in schools.

The equipment is set up on an Anodized aluminium frame on casters wheels. This gives it great strength and a flexibility of integration into your premises.

The manufacture of this equipment complies with the European standard for machinery manufacturing.

This equipment can be used alone or with other compatible equipment from our range (see last section of this document).

Illustrations Technical details



- **1 mobile aluminum structure**
- **1 electric box** with transparent cover allowing the control of installation three-phase 400V 220V for a total capacity of more than 3kW
- **1 three phase heating battery** 2kW
- **1 belt power transmission** system
- 1 three phase **motor** 2.2kW mini
- **1 kit of electrical defects** (cable heating, cutting or phase imbalance ...)
- **1 kit of thermal defect** (thermal conduction of an electrical cable, fault of thermal bridge, cooling failure of an engine)
- **1 kit of mechanical defects** (overheating of a bearing, pulley misalignment)
- **1 Clamp Ammeter**, adapted to MT1100 bench is provided to perform various comparative measurements (current, temperature, voltage, etc ...)
- **1 thermometer** equipped with a contact probe -50 - + 300 °C
- **1 Storage case** for all accessories

DIDATEC– Zone d'activité du parc – 42490 FRAISSES- FRANCE
Tél. +33(0)4.77.10.10.10 – Fax+33(0)4.77.61.56.49 – www.didatec-technologie.com
email : service_commercial@didatec-technologie.com

Reproduction interdite / copy prohibited– Copyright DIDATEC mai-16- page 2

Dans le cadre de l'amélioration permanente de nos produits, ce descriptif technique est susceptible d'être modifié sans préavis
As part of the continuous improvement of our products, this technical specification may be modified without previous notifying

MTI100



Services required

- Electrical supply : 400 Vac – 50 Hz – 16 A
- Dimensions: (LxWxH mm): 1300 x 750 x 2100
- weight (Kg): 137

Note : if the equipment installation is operated by our staff, all supplies and exhaust connections required must stand at less than 2m from the machine

Documentation

- User's manual
- Technical documentation of the components
- Lab exercises
- Certificate of conformity CE

Options

- Infrared camera FLUKE or equivalent
with a color screen
batteries + charger
user manual and storage case