

HOT WATER TANK 600L+HOT DOMESTIC WATER



Experimental capabilities

- **Identification and role of components of a hydro-accumulation installation**
- **Study of the stratification of the water in a tank**
- **Filling a storage tank**
- **Filling the part DHW**
- **Preventive and curative maintenance**

DIDATEC– Zone d'activité du parc – 42490 FRAISSES- FRANCE
Tél. +33(0)4.77.10.10.10 – Fax+33(0)4.77.61.56.49 – www.didatec-technologie.com
email : service_commercial@didatec-technologie.com

Reproduction interdite / copy prohibited– Copyright DIDATEC févr.-16- page 1

Dans le cadre de l'amélioration permanente de nos produits, ce descriptif technique est susceptible d'être modifié sans préavis
As part of the continuous improvement of our products, this technical specification may be modified without previous notifying

Operating principle

The BAL059 installation allows the learner to deal with a real case of activities. The installation consists of a storage tank, heating and domestic hot water, of primary, secondary and complete sanitary network.

It is possible to perform various types of practical work on the installation starting with the mapping of the system until assessment of full functionality (using instrumentation to remain on the system), via commissioning, adjustment and maintenance, that it is preventive or curative.

The design of the installation allows it to connect to different production modules (solar, heat pump, floor furnace, wall mounted boiler) and various dissipation modules (three-way valve, radiators, heated floor, unit heater, plate exchanger).

The robust design of this equipment makes it perfectly suited for school use.

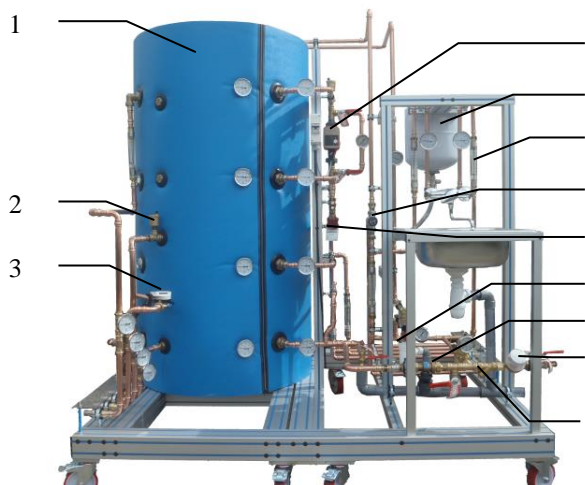
Its anodized aluminum structure on wheels makes it very robust as well as a great flexibility of integration into your premises.

The manufacture of this equipment meets European machine directive

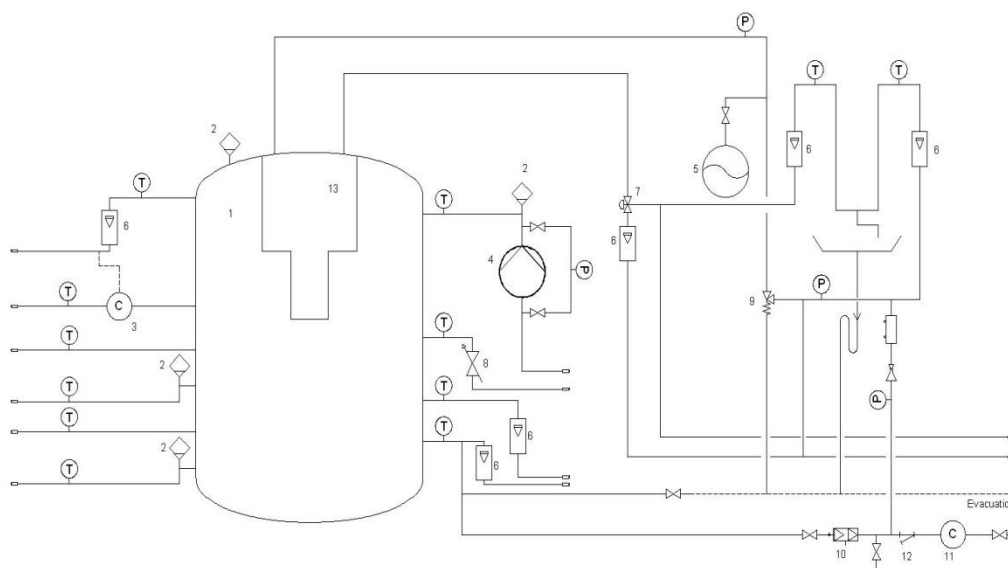
This equipment can be used alone or with other compatible equipments in our range (see last section of this document).

Illustrations

Technical specifications



1. Solar tank 600 L
2. Automatic air vent
3. Energy meter
4. Circulator
5. DHW expansion tank
6. Float flowmeter
7. Thermostatic mixing valve
8. Flow rate control valve
9. Safety group
10. Backflow preventer
11. Water meter
12. Strainer
13. DHW Tank interior 170 L



BAL059



Services required

- Power supply: 230 Vac Ph+N – 50 Hz – 6 A
- Electrical supply Type: Phase + Neutral + Earth.
- Water capacity: 650 L approx
- Dimensions: (LxWxH mm): 2400 x 1400 x 2000
- weight (Kg): 520

Note : if the equipment installation is operated by our staff, all supplies and exhaust connections required must stand at less than 2m from the machine

Documentation

- User's manual
- Pedagogical manual
- Technical documentation of the components
- Certificate of conformity CE

Additional compatible equipments

- Solar installation
- CAP
- Floor standing boiler
- Wall mounted boiler
- Unit Heater
- Radiator
- Heated floor
- Ref : ERS 100
- Ref : ERT 050
- Ref : TCF 050
- Ref : TCF 101
- Ref : AER 033
- Ref : TCF 124
- Ref : TCF 121