

CAPPING MACHINE FOR BOTTLES



Experimental capabilities

- **Production line control (format change, setting, configuration)**
- **Change format**
- **Mechanical settings + change of tooling**
- **Replacing failed components**
- **Degraded mode**
- **Conveyor speed setting**
- **Study of different types of pneumatic actuators (gear motor, cylinder and venturi + suction cup)**
- **Configuration on ASI bus**
- **Functional analysis, technical, industrial maintenance organization**

Operating principle

The automated capping system MLP 335 is integrated in a packaging line corresponding to the MLP range of DIDATEC. It allows to study the operation of a post of product handling, and to perform maintenance on. It can be used in on-line operation, in automatic autonomous-post, or in degraded mode. It also allows us to study the parameterization / control and settings associated with this type of operation, as well as the study of the management of production and traceability of flows, including within the framework of an operation in degraded mode.

It can either be used as part of the learning of industrial electricity, of automation, of the maintenance, and production control on automated systems.

The robust design of this device makes it suitable for use in schools. The equipment is set up on an Anodized aluminium frame on casters wheels. This gives it great strength and a flexibility of integration into your premises. The manufacture of this equipment complies with the European standard for machinery manufacturing.

This equipment can be used alone or with other compatible equipment from our range (see last section of this document).

Technical details

Chassis :

Carrier structure in aluminum profiles with suitable section, mounted on 4 directional castors with brakes. Access doors on front and rear face of the machine (equipped with magnetic safety contact). conveyor belt

Electrical box:

Integrated on the chassis of the MLP 335
Circuit breakers and differential
Preventa module
Main switch
Magelis display
PLC M340 with module Modbus TCP IP
Variator for conveyor
ASI Master module
Buttons and control switches
Machine status indicators

Operative part:

A system of ginning cylinders (double cylinder ensuring the unitary supply of the containers to the post)
A system of clamping cylinders and of stop
Reflex optical detectors to detection of the presence of products & saturation to different stages of the process
Set of distributors integrated on ASI bus
Modules for connection of detectors on ASI bus distributed over the machine
A caps stocker
Handling system of caps by aspiration: suction cup + pressure switch + venturi - vacuum switch for detecting of the aspiration
Capping system by screwing

Services required

Documentation

- Electrical supply : 400 Vac tetra- 50 Hz – XX A
- Compressed air supply: 6-8 bars (dry air)
- Dimensions: (LxWxH mm): 2350 x 800 x 2000
- weight (Kg): 250
- User's manual
- Pedagogical manual
- Technical documentation of the components
- Lab exercises
- Certificate of conformity CE

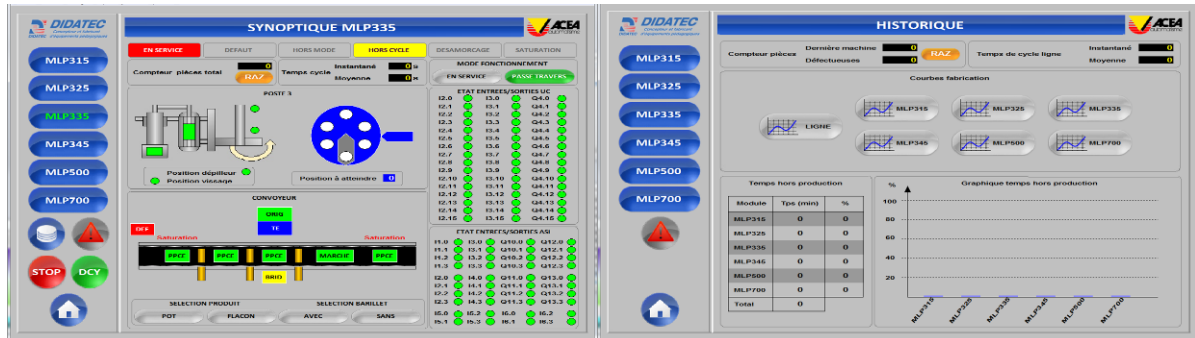
Note : if the equipment installation is operated by our staff, all supplies and exhaust connections required must stand at less than 2m from the machine

MLP335



Recommended equipment

- Upstream: Dynamic feed table
 - Upstream: Conveyor angle gear at 90°
 - Upstream: Volumetric dosage machine of liquids
 - Upstream: Weight filling machine of granules
 - Downstream: Control machine
 - Downstream: Automatic cartooning
 - 6-axis robotic arm
 - Supervision in Ethernet network
- MLP 205
 - MLP 206
 - MLP 315
 - MLP 325
 - MLP 345
 - MLP 500
 - MLP 550
 - MLP 800



DIDATEC– Zone d'activité du parc – 42490 FRAISSES- FRANCE
Tél. +33(0)4.77.10.10.10 – Fax+33(0)4.77.61.56.49 – www.didatec-technologie.com
email : service_commercial@didatec-technologie.com

Reproduction interdite / copy prohibited– Copyright DIDATEC avr.-16- page 3

Dans le cadre de l'amélioration permanente de nos produits, ce descriptif technique est susceptible d'être modifié sans préavis
As part of the continuous improvement of our products, this technical specification may be modified without previous notifying

Illustrations non contractuelles / Illustrations not contractual

version : FT-MLP335-STD-B