

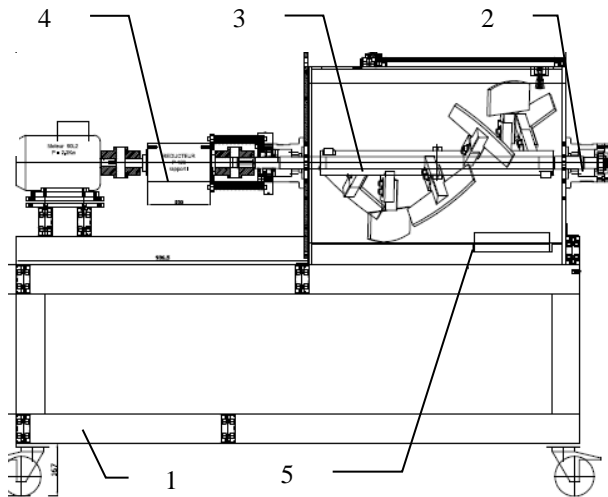
MAINTENANCE OF RIBBON BLENDER



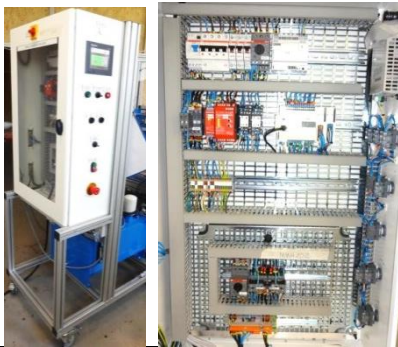
Experimental capabilities

- **System of conduct**
- **Parameterization**
- **Automation**
- **Technology change (electric motorization -> hydraulic)**
- **Preventive maintenance: seals, guidance, lubrication, control ...)**
- **Corrective maintenance: hydraulic distributor, cylinder detector, contactor ... (faulty equipment supplied)**
- **Integration of different hydraulic solutions of flow rate management (flow rate limiter / flow rate regulator / proportional regulator 2-way, proportional flow rate regulation 3-way) to improve the functioning of the system (variable speed) and comparison of their interest.**
- **Assembly / mechanical disassembly: bearings, of the motorization, of the tank flange, of the rotor, of the tank drainage mechanism ...)**

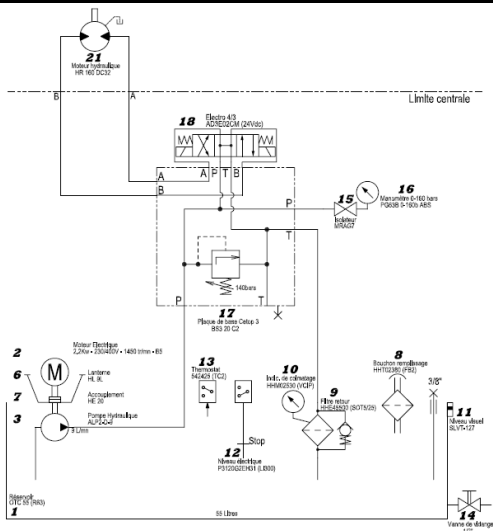
MMH102



1: Chassis / 2: Bearings / 3: Rotor / 4: Gear motor / 5: Discharge hatch



6 : Electrical Box



7: Hydraulic base schema (6 declinations available with the equipment provided)

Technical characteristics:

1. Metallic chassis on braked swivel wheels
2. Bearings - rolling bearings double row of swiveling balls - lip seals - tank sealing by cable gland - adjusting screw of the position of the bearing
3. Rotor with steel blades - offset adjustable blades - position of adjustable axis by the bearings.
4. 2.2 kW gear motor epicyclic reducer - 56TR / min approx. at the output (may be replaced by other geared motors and so that the hydraulic motor provided with the power station)
5. Lower hatch of drainage guided by ball bearings and ball-bearing rollers- pneumatic cylinder- 2 ILS detectors - distributor 5/2
6. Electrical box (see detail below) mounted on mobile structure also including the hydraulic power plant of the machine.
7. Hydraulic ensemble (see diagram) consisting of: hydraulic plant with 55L tank, 2.2kW motor, geared pump 9L/min approx, pressure limiter, thermostat, a visual level, return filter with clogging indicator, manometer, pressure taps, 4/3 distributor, motor 160cm³ / rev

Electrical box:

Box on mobile structure

- Console with pushbuttons, LEDs, and HMI color touch magelis 5.7 "
 - Twido PLC, circuit breakers, differential, motor circuit breakers, main contactor, 24vdc power ...
 - 3 interchangeable motor plates:
- Provided: contact. inverter - soft starter Option: Variator

Accessories (included):

- Replacement material provided: 2 ball sleeves, 1 set of braids, 1 bearing seals kit, 2 ball bearings.
- Defaulting equipment provided (for diagnostic and corrective maintenance): 1 hydraulic distributor, 1 pneumatic cylinder, 1 contactor, 1 detector.
- Equipment for improvement activities: 1 limiter of hydraulic dual flow rate, 1 manual flow rate regulator, 1 proportional flow rate regulator 2 and 3 ways and 1 compact regulating board.
- 2 manometers and 1 flowmeter
- 2 material trays
- 1 oil barrel

Services required

- Electrical supply : 400Vac – 50 Hz
- Dimensions: (LxWxH mm): 1100 x 670 x 1800
- weight (Kg): 500

Note : if the equipment installation is operated by our staff, all supplies and exhaust connections required must stand at less than 2m from the machine

Documentation

- User's manual
- Pedagogical manual
- Technical documentation of the components
- Certificate of conformity CE

DIDATEC– Zone d'activité du parc – 42490 FRAISSES- FRANCE
 Tél. +33(0)4.77.10.10.10 – Fax+33(0)4.77.61.56.49 – www.didatec-technologie.com
 email : service_commercial@didatec-technologie.com

Reproduction interdite / copy prohibited– Copyright DIDATEC mai-16- page 2

Dans le cadre de l'amélioration permanente de nos produits, ce descriptif technique est susceptible d'être modifié sans préavis
 As part of the continuous improvement of our products, this technical specification may be modified without previous notifying

Illustrations non contractuelles / Illustrations not contractual

version : FT-MMH102-STD-B