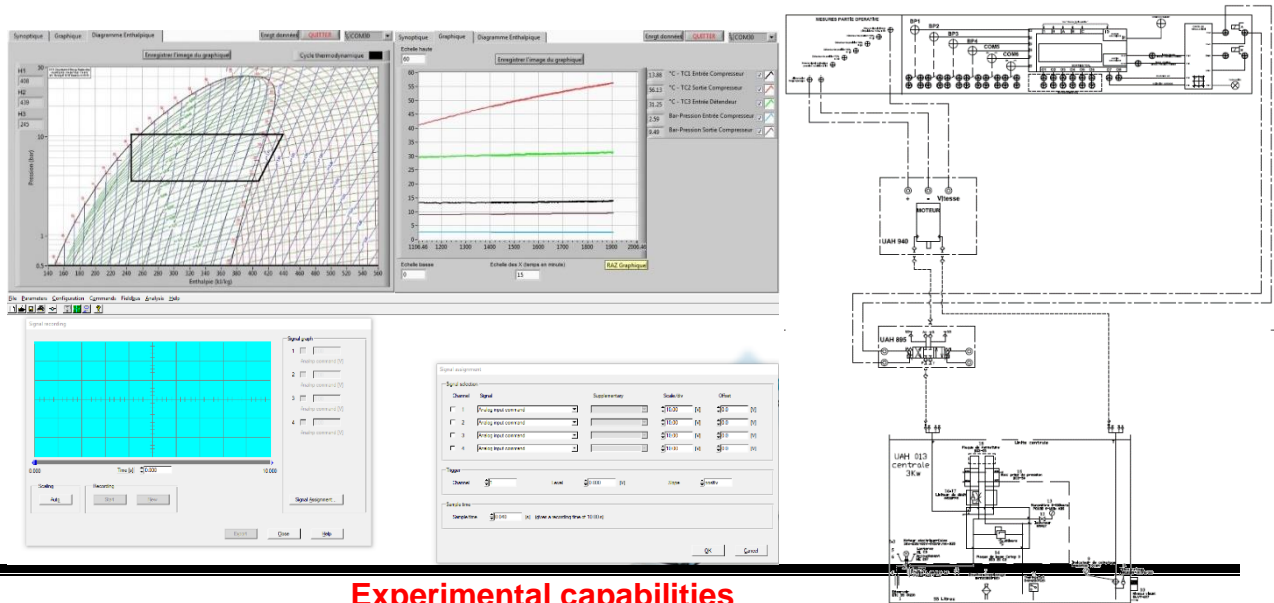


SUPERVISION AND DATA ACQUISITION BOX FOR HYDRAULIC WORKSTATION PROPORTIONAL UAH



Experimental capabilities

- Data acquisition of velocity, position, pressure or flow rate, according to the operative part studied
- Connection with the PLC of the Hydraulic workstation proportional
- Visualization and control of the values of velocity, position, pressure or flow rate of the operative part connected
- Recording of data towards an Excel file type

Operating principle

The supervision box UAH650 allows the data acquisition
 Students will initially prepare the practical work (electrical and hydraulic connection) with the operative part to study
 They will then connect electrically this module at a hydraulic workstation proportional and connect it to a Windows computer
 They then launch software with program appropriate to the operate part to study
 The unit is delivered with all the necessary material (cable and Software) to connect at the workstation and a computer
 The manufactory of this equipment is conforming to European standards

Services required

Documentation

- To be functional, a unit must be connected to the electrical panel of a workstation UAH011 or UAH013
- Electrical supply by the workstation : 24 Vdc
- Dimensions: (LxWxH mm): 350 x 215 x 200
- weight (Kg): 3
- User's manual
- Technical documentation of the components
- Configuration files (PLC, controller)
- Software
- Certificate of conformity CE

Note : if the equipment installation is operated by our staff, all supplies and exhaust connections required must stand at less than 2m from the machine