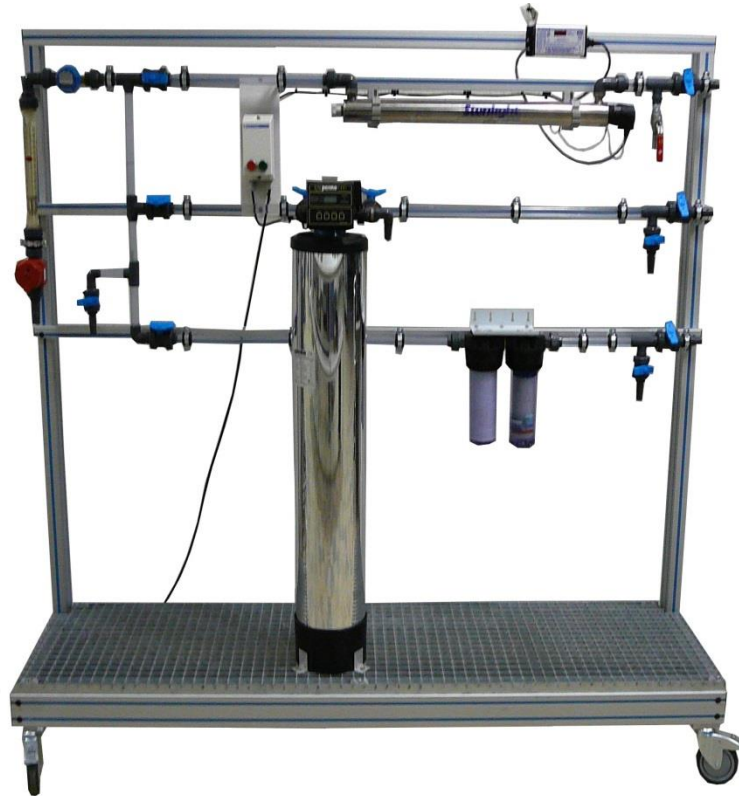


DOMESTIC WATER TREATMENT



Experimental capabilities

- Study of a domestic water treatment installation
-
- Setting a sand filter
-
- Role of the various components
-
- Measurement of the turbidity of a water

Operating principle

The test bench consists of the elements necessary for the treatment of water, they are fixed on chassis made of aluminum profiles, the set on wheels is easily mobile.

Mains water is sent into three different lines equipped with a domestic water treatment system.

The system allows to study a UV sterilization, a sand filter and a cartridge filter processing.

The network is realized in PVC tube.

Sample takings are being planned at various points of the circuit.

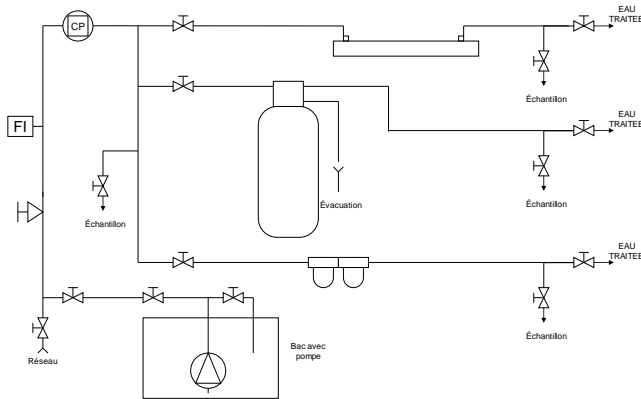
The robust design of this device makes it suitable for use in schools.

The equipment is set up on an Anodized aluminium frame on casters wheels. This gives it great strength and a flexibility of integration into your premises.

The manufacture of this equipment complies with the European standard for machinery manufacturing.

This equipment can be used alone or with other compatible equipment from our range (see last section of this document).

Illustrations



Technical details

Multi-turn control valve

Float flowmeter

Volumetric meter

UV filter

Sand filter

Water preparation tank "dirty" with integrated pump

Double cartridge filter

A dirt bag "pollution"»

INSTRUMENTATION

Turbidity (turbidity measurement)

Services required

- Electrical supply 230 Vac
- Water supply : network
- Water drain : on the floor
- Dimensions: (LxWxH mm): 1800 x 800 x 1700
- weight (Kg): 80

Documentation

- User's manual
- Pedagogical manual
- Technical documentation of the components
- Certificate of conformity CE

Note : if the equipment installation is operated by our staff, all supplies and exhaust connections required must stand at less than 2m from the machine